

# AARVI<sup>TM</sup>

COLOR SORTER

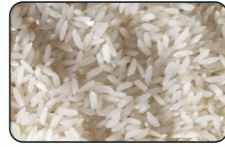
## FROM THE HEART SUPERB SORTING

### COLOR SORTING APPLICATION

Sorting  
Light Yellow



Raw Material



Accept



Light Yellow Rejection

Sorting  
Belly White



Accept



Belly white Rejection



Core Chalky Rejection

Sorting  
Yellowish  
And White



Accept

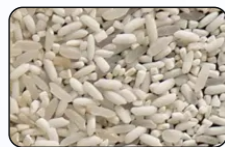


Yellow Rejection

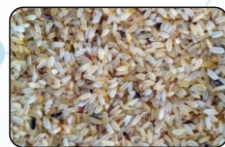


Belly white Rejection

Sorting  
Yellow And  
Transparent



Accept



Yellow Rejection



Transparent Rejection

### SHAPRE SORTING APPLICATION

Long Grain  
Rice



Accept

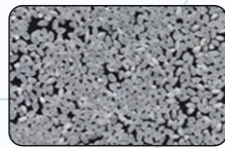


Medium Broken

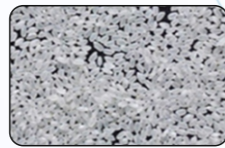


Small Broken

Round Grain  
Rice



Accept



Big Broken



Small Broken

### Can Sort Other Rice



Black Rice



Red Rice



Parboiled Rice



Little Yellow Rice

### Rejection Miscellaneous Material

Glass \*\*\*\*

Desiccant \*\*\*\*

Ceramic \*\*\*

Plastic \*\*\*



# AARVI<sup>TM</sup>

COLOR SORTER



8, Prakash Nagar,  
Ayodhya Bypass Road, Bhopal-462023



ashish.com06@gmail.com



+91-9907499972, 9977790028



www.aarvicolorsorter.com

# AARVI<sup>TM</sup>

COLOR SORTER

## Grain Color Sorter AARVI intelligent

Tri-Chromatic CCD  
Rice Color Sorter  
With Intelligent Cloud Interconnection  
To Short The Rice Using Latest Technology

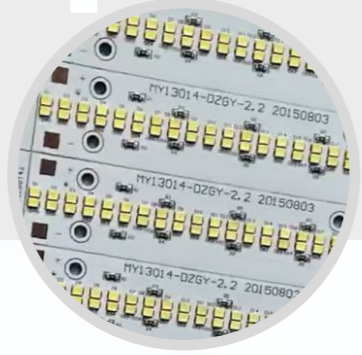


# AARVI<sup>TM</sup>

## COLOR SORTER



### PEARL



#### PRODUCT PARAMETERS

##### Specifications

Model	Channel	Capacity	Compressor	Voltage	Power (KW)	Dimension (mm) L x W x H	Weight (Kg)	Accuracy	Rejection
	Chute	( T/H )	( HP )						
RDR - 3	192/3	1.5 To 2	15 HP	220V / 50Hz	1.8 Kw	1635 * 1641 * 1967	580	> 99 %	20:1
RDR - 4	256/4	2 To 2.5	20 HP	220V / 50Hz	2 Kw	1949 * 1641 * 1967	720	> 99 %	20:1
RDR - 5	320/5	2.5 To 3	25 HP	220V / 50Hz	3 Kw	2314 * 1590 * 2050	900	> 99 %	20:1
RDR - 6	384/6	3 To 3.5	30 HP	220V / 50Hz	3.5 Kw	2630 * 1590 * 2050	1020	> 99 %	20:1
RDR - 7	448/7	3.5 To 4	35 HP	220V / 50Hz	4 Kw	2942 * 1590 * 2050	1250	> 99 %	20:1
RDR - 8	512/8	4 To 4.5	40 HP	220V / 50Hz	4.5 Kw	3443 * 1590 * 2050	2000	> 99 %	20:1
RDR - 10	640/10	4.5 To 5	50 HP	220V / 50Hz	5 Kw	4070 * 1590 * 2050	2500	> 99 %	20:1

# AARVI<sup>TM</sup>

## COLOR SORTER



### STORM



#### PRODUCT PARAMETERS

##### Specifications

Model	Channel	Capacity	Compressor	Voltage	Power (KW)	Dimension (mm) L x W x H	Weight (Kg)	Accuracy	Rejection
	Chute	( T/H )	( HP )						
RDR - 3	192/3	1.5 To 2	15 HP	220V / 50Hz	1.8 Kw	1635 * 1641 * 1967	580	> 99 %	20:1
RDR - 4	256/4	2 To 2.5	20 HP	220V / 50Hz	2 Kw	1949 * 1641 * 1967	720	> 99 %	20:1
RDR - 5	320/5	2.5 To 3	25 HP	220V / 50Hz	3 Kw	2314 * 1590 * 2050	900	> 99 %	20:1
RDR - 6	384/6	3 To 3.5	30 HP	220V / 50Hz	3.5 Kw	2630 * 1590 * 2050	1020	> 99 %	20:1
RDR - 7	448/7	3.5 To 4	35 HP	220V / 50Hz	4 Kw	2942 * 1590 * 2050	1250	> 99 %	20:1
RDR - 8	512/8	4 To 4.5	40 HP	220V / 50Hz	4.5 Kw	3443 * 1590 * 2050	2000	> 99 %	20:1
RDR - 10	640/10	4.5 To 5	50 HP	220V / 50Hz	5 Kw	4070 * 1590 * 2050	2500	> 99 %	20:1

# AARVI<sup>TM</sup>

## COLOR SORTER



- Wi-Fi System
- Ejector Life 5 Billion Cycles
- Product Scanning Speed of 35,000 Lines/Sec.
- FPGA (Field Programmable Gate Array) Possessing with Auto Intelligent Digital Image Sorting Technology
- Photo Capture Technology
- Auto Celebration Feature with Auto Setting & Auto Sorting Control